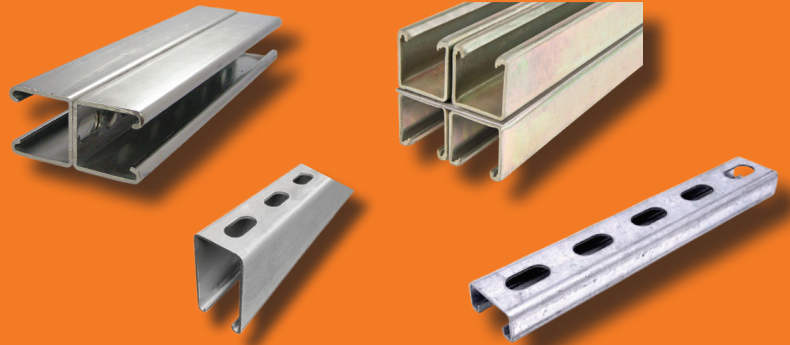




STRUT PRODUCTS

STRUT VARIATIONS

- Back-to-Back
- Concrete Insert
- Custom Combinations
- Deep Channel
- Half Slot Channel
- Long Slotted Channel
- Punched Holes
- Quad Combinations
- Solid Channel
- Shallow Channel
- Side-to-Side
- Triple Combinations



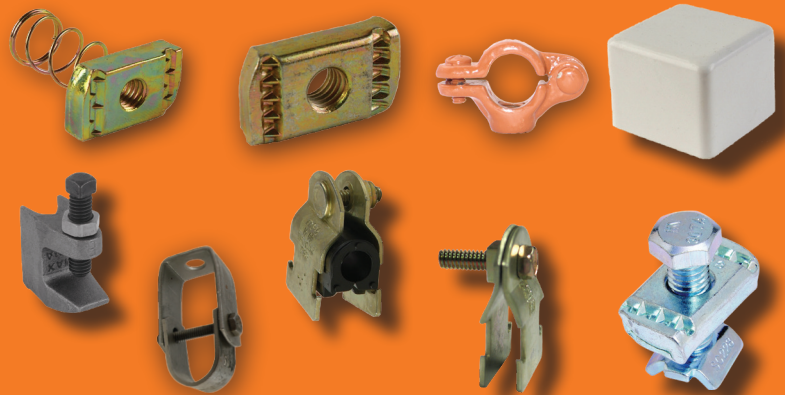
STRUT MATERIALS & FINISHES

- 304 Stainless Steel
- 316 Stainless Steel
- Aluminum
- Carbon Steel
- Defender Series
- Electro Galvanized
- Fiberglass Polyester Gray
- Green Finish
- Hot Dipped Galvanized
- Pre-galvanized Finish
- Yellow Zinc Finish



STRUT ACCESSORIES

- Angle Brackets
- Beam Clamps
- Cushion Clamps
- End Caps
- Flat Fittings
- Gusseted Brackets
- Hangers
- Pipe/Tube Clamps
- Pipe/Tube Insulation
- Post Bases
- Seismic Rod Stiffeners
- Strut Mounted Bases
- Strut Nuts & Washers
- Wing Fittings



MANUFACTURERS

- ABB- Thomas & Betts
- Atkore Unistrut
- Haydon
- Kumar Industries
- PHD Manufacturing
- Phoenix Support Systems
- Other Brands & Manufacturers Can Be Specially Sourced





STRUT PRODUCTS

FULL-LINE STOCKING DISTRIBUTOR

- 500,000 Sq. ft Distribution Space
- Comprehensive Product Range with Inventory On-Hand Tailored to Each Market
- Over 30 Stocking Locations



ON TIME DELIVERY

- Fleet of Stakebed Trucks & Semi's
- Jobsite Tailored Logistics
- Sequenced Delivery
- Vendor Drop Shipping Capabilities
- Vendor Managed Inventory



ENGINEERING & PRE-FAB SERVICES

- Cable Tray, Trapeze, & Rack Fabrication and Pre-Assemblies
- Cut-To-Length All-thread & Strut
- Engineering Detailing & Calculations
- OSM Support/ BOM Management
- Product Submittals & Shop Drawings

